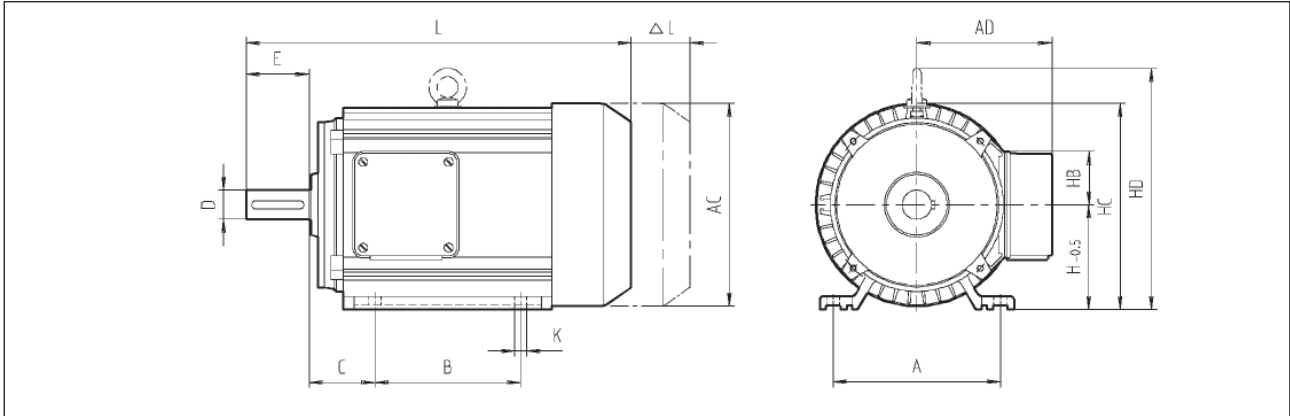


Dimension Tables

Dimensions of conventional motors according to DIN EN 50347

Type : B 3, B 6, B 7, B 8, V 5, V 6

Dimensions in mm



Model size	A	AC	AD	AD'	B	C	D	E	H	HB	HB'	HC	HD	K	L	Brake Type	Δ L
56	90	110	94	112	71	36	9	20	56	54	66	111	-	6	188	EFB	35
63	100	124	96	112	80	40	11	23	63	45	53	125	-	7	209.5	EFB	32.5
71	112	139	101	117	90	45	14	30	71	40	47.5	140.5	-	7	237	EFB	40
																ZFB	54.5
80	125	158	108	124	100	50	19	40	80	40	47.5	159	-	10	273	EFB	40
																ZFB	67.5
90S	140	177	122	140	100	56	24	50	90	51	57.5	178.5	-	10	299.5	EFB	56.5
																ZFB	77
90L	140	177	122	140	125	56	24	50	90	51	57.5	178.5	-	10	324.5	EFB	56.5
																ZFB	77
100L	160	196	130	148	140	63	28	60	100	51	57.5	198	233	12	369	EFB	56.5
																ZFB	96
112M	190	220	140	158	140	70	28	60	112	51	57.5	222	254	12	389	ZFB	86.5
112Me	190	220	140	158	190	70	28	60	112	51	57.5	222	254	12	458	ZFB	86.5
132S	216	262	181	190	140	89	38	80	132	73	84	263	308	12	456	ZFB	109
132M	216	262	181	190	178	89	38	80	132	73	84	263	308	12	494	ZFB	109
132Md	216	262	181	190	178	89	38	80	132	73	84	263	308	12	524	ZFB	109
132L	216	262	181	190	248	89	38	80	132	73	84	263	308	12	564	ZFB	109
160M	254	310	-	238	210	108	42	110	160	-	84	315	364	13	587	ZFB	124
160L	254	310	-	238	254	108	42	110	160	-	84	315	364	13	631	ZFB	124

Illustrations are for reference only and subject to change.

The dimensional tables are for the following motor types:

- Three-phase AC Motors
- Single-phase motors without capacitor(s)
- Two-speed motors

Dimensions AD and HB apply to plastic junction box. Dimensions AD' and HB' apply to the aluminum junction box. Key way dimensions according DIN 6885 sheet 1.

Motor Type (model size)	Holes for cable connection(s) in plastic junction box	Holes for cable connection(s) in aluminum junction box
56 - 80	1x M16 x 1.5 resp. 2x M16 x 1.5 on motor with brake	1x Ø 20 resp. 2x Ø 20 on motor with brake
90 - 100	1x M20 x 1.5 resp. 2x M20 x 1.5 on motor with brake	1x Ø 25 resp. 2x Ø 25 on motor with brake
112	2x M20 x 1.5	2x Ø 25
132 - 160	2x M25 x 1.5	2x M25 x 1.5