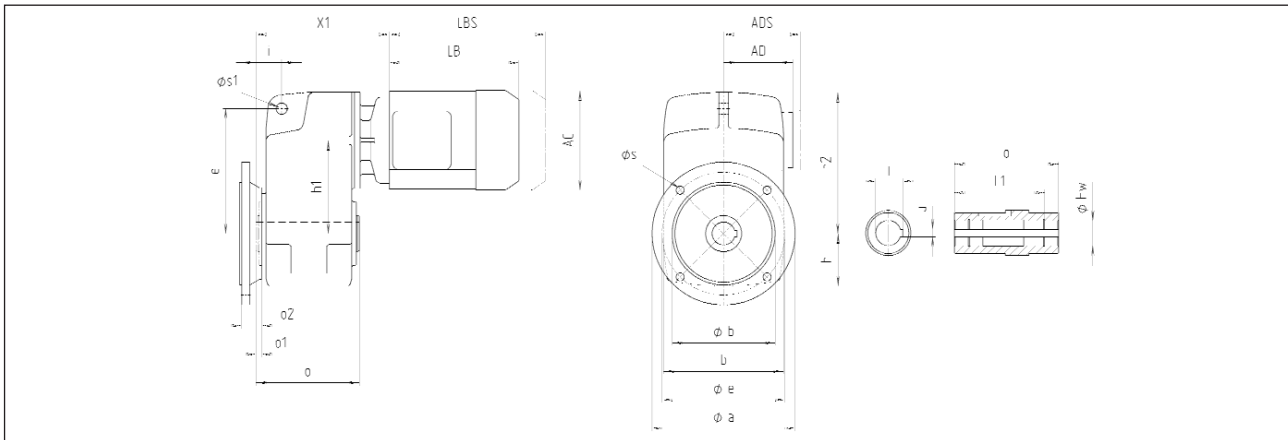
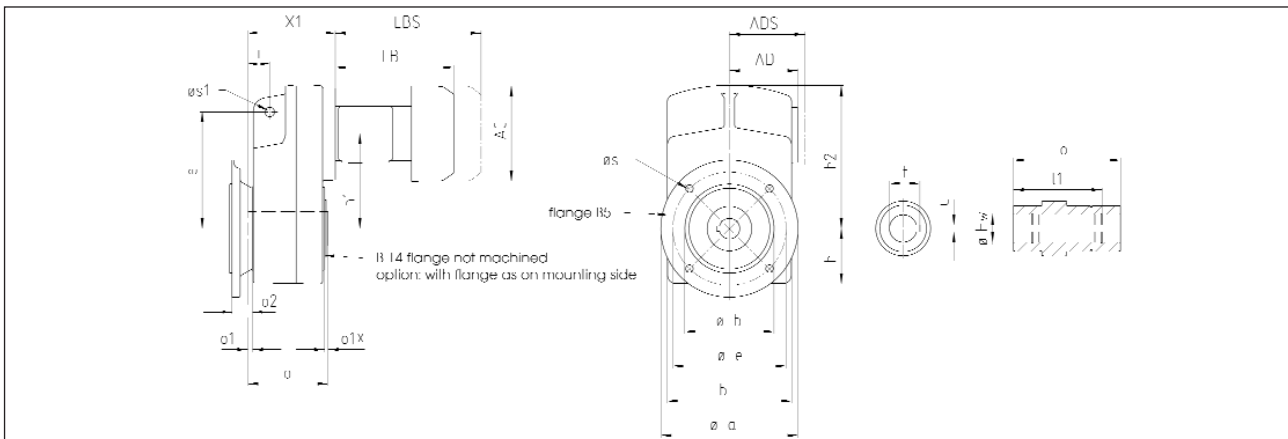


Dimensions

Dimensions for **2**-stage shaft mounted helical geared motors
(Slip-on execution with flange B 5)*



Gear box type	Gearbox related dimensions [mm]			Motor type	Motor related dimensions [mm]			
	AC	AD	LB		X ₁			
FGA 252	∅ a = 200	h ₁ = 110	o ₁ = 7	D71	139	101	172,5	165
	b = 150	h ₂ = 170	o ₂ = 30	D80	158	108	199	178,5
	∅ b = 130	∅ HW = 30	∅ s = 11	D90S	177	122	211,5	181
	e = 150	i = 32	∅ s ₁ = 14	D90L	177	122	236,5	181
	∅ e = 165	L ₁ = 129,3	t = 33,3	D100L	196	130	276	180,5
	h = 65,5	o = 146	u = 8					



Gear box type	Gearbox related dimensions [mm]			Motor type	Motor related dimensions [mm]			
	AC	AD	LB		X ₁			
FGA 422	∅ a = 200	h ₂ = 209	∅ s = 11	D63	124	96	157	128,5
	b = 181	∅ HW = 30 / 35	∅ s ₁ = 14	D71	139	101	172,5	127,5
	∅ b = 130	i = 32	t = 33,3 / 38,3	D80	158	108	199	136,5
	e = 170	L ₁ = 97	u = 8 / 10	D90S	177	122	211,5	136,5
	∅ e = 165	o = 117		D90L	177	122	236,5	136,5
	h = 80,5	o ₁ = 7		D100L	196	130	276	161,5
	h ₁ = 138,5	o ₂ = 30						
FGA 952	∅ a = 250	h ₂ = 266	o ₂ = 35	D100L	196	130	276	171
	b = 215	∅ HW = 40 / 50	∅ s = 14					
	∅ b = 180	i = 41,5	∅ s ₁ = 21					
	e = 218	L ₁ = 142,8 / 142,1	t = 43,3 / 53,8					
	∅ e = 215	o = 165	u = 12 / 14					
	h = 106	o ₁ = 8,5						
	h ₁ = 231							